

Assignment #1

Due at .

Overview

You must work individually to create a series of connected web forms. The work you do on this assignment will likely be re-used in your subsequent assignments.

Context

The web application that you are creating this semester is one that allows book salespeople (called book reps) to easily research their publisher's offerings and manage their customers.

Currently publishers use book reps to visit with potential customers (professors, book store buyers, corporate buyers) to see what their needs are, provide suggestions, and to take requests for complementary review copies of books.

In the current system, the book reps write down request information on paper, search through paper-based catalogs or ask the customer to individually search the different publisher's web sites. They then return to their office and phone in the customer's review copy book requests to the fulfillment centre warehouse.

During the semester, you will be creating and modifying a web-based customer-relations management (CRM) system for the book reps of this publisher.

Submitting

Put your assignment in a folder based on your last name+assign1 (e.g., mine would be ConnollyAssign1). Put any resources used by your assignment into this folder. Copy the folder to the submit drive.

Grading

The grade for this assignment will be broken down as follows:

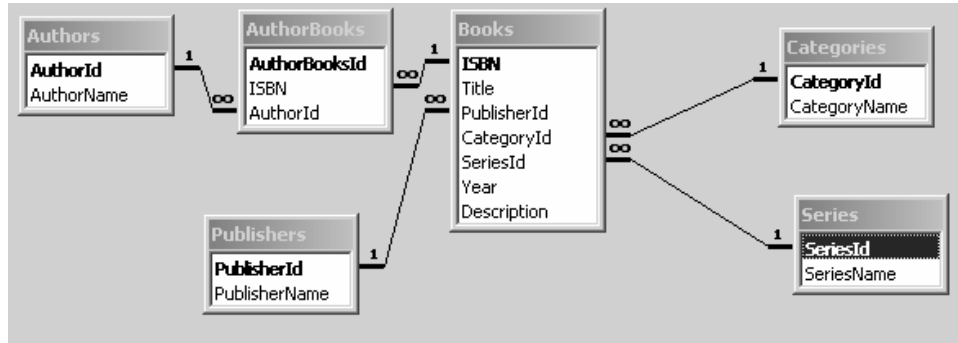
| | |
|----------------------------------|-----|
| Usability and Visual Design | 20% |
| Program Design and Documentation | 20% |
| Features | 60% |

Database

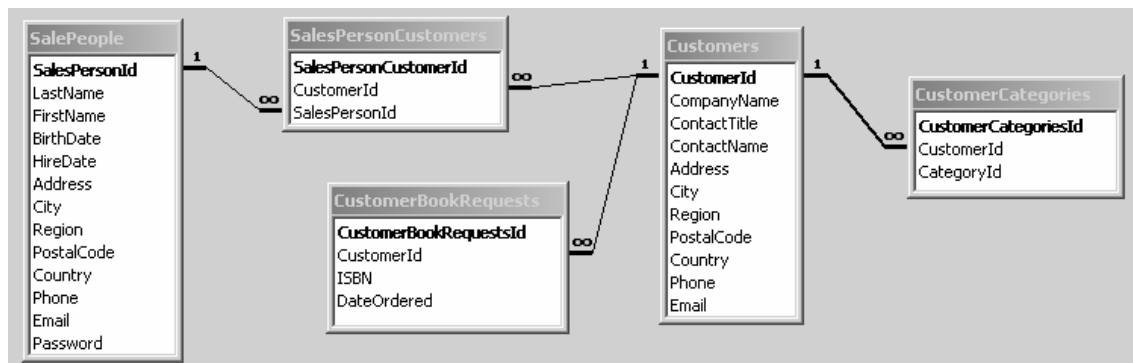
This assignment will not be database-driven. Nonetheless, you will want to know the database schema when designing the web forms in this assignment.

There will be two databases used in this assignment:

- **BookCatalog.** This represents the product catalog for the publisher. Salespeople have limited, read-only access to this database.



- **CustomerRelations.** This represents the customer information for the salesperson. The site will allow salespeople to view and edit the data in this database.



Deliverables

You must create the following web forms.

1. **Add customer form.** This form must allow the user to enter all the modifiable values in the Customers table. CompanyName, ContactName, Phone and Email are required fields. Email must be a valid email. When the user submits the form and the data is valid, simply postback to the same page, hide the entered form, and display the entered data within a single Label control.

The form must also supply a button that allows the user to view/add/remove which categories (from the BookCatalog database) they are interested in (from the same web form). This should use a drop-down list that contains some sample category names from the Categories table.

2. **Add Sales person form.** This form must allow the user to enter all the modifiable values in the SalesPerson table. LastName, FirstName, HireDate, Phone, Email and Password are required. Email must be a valid email. HireDate must be between Jan 1 2002 and the current date. Password must be entered twice and must match. When the user submits the form and the data is valid, simply postback to the same page, hide the entered form, and display the entered data within a single Label control.
3. **Display book information form.** This form will display the information for a single book. Simply use the data from a sample record from the Books table. It should display the medium cover image, the title, the publisher's name, category name, series name, authors' name(s), the year and the description. The publisher, category, author, and series names should be links. When the link is clicked, this should generate a postback that displays the appropriate id value for the name that was clicked.

The description is actually XML content. Use the XML control and an XSLT file to transform the XML description into paragraphs and the XML topics into a bulleted list.

All three of these web forms must be consistently formatted using a single consistent style sheet.